



Harvester Guard inspection certificate

# John Deere 7250

#24104-30



**AMMACHINERY**

Industriestraat 23  
5961 PH Horst  
The Netherlands  
T + 31 (0)77 - 2066603  
sales@ammachinery.nl  
<https://www.ammachinery.nl/>



Dear sir/madame,

Thank you for your interest in our **John Deere 7250** built in ,with our internal stock number **24104-30**.We are a dedicated SPFH specialist, we work professional and transparent, all our equipment is cleaned and run trough our 300 points inspection report. Use this link to get below information:

**<https://www.ammachinery.nl/john-deere-7250.html>**

## Technical specifications

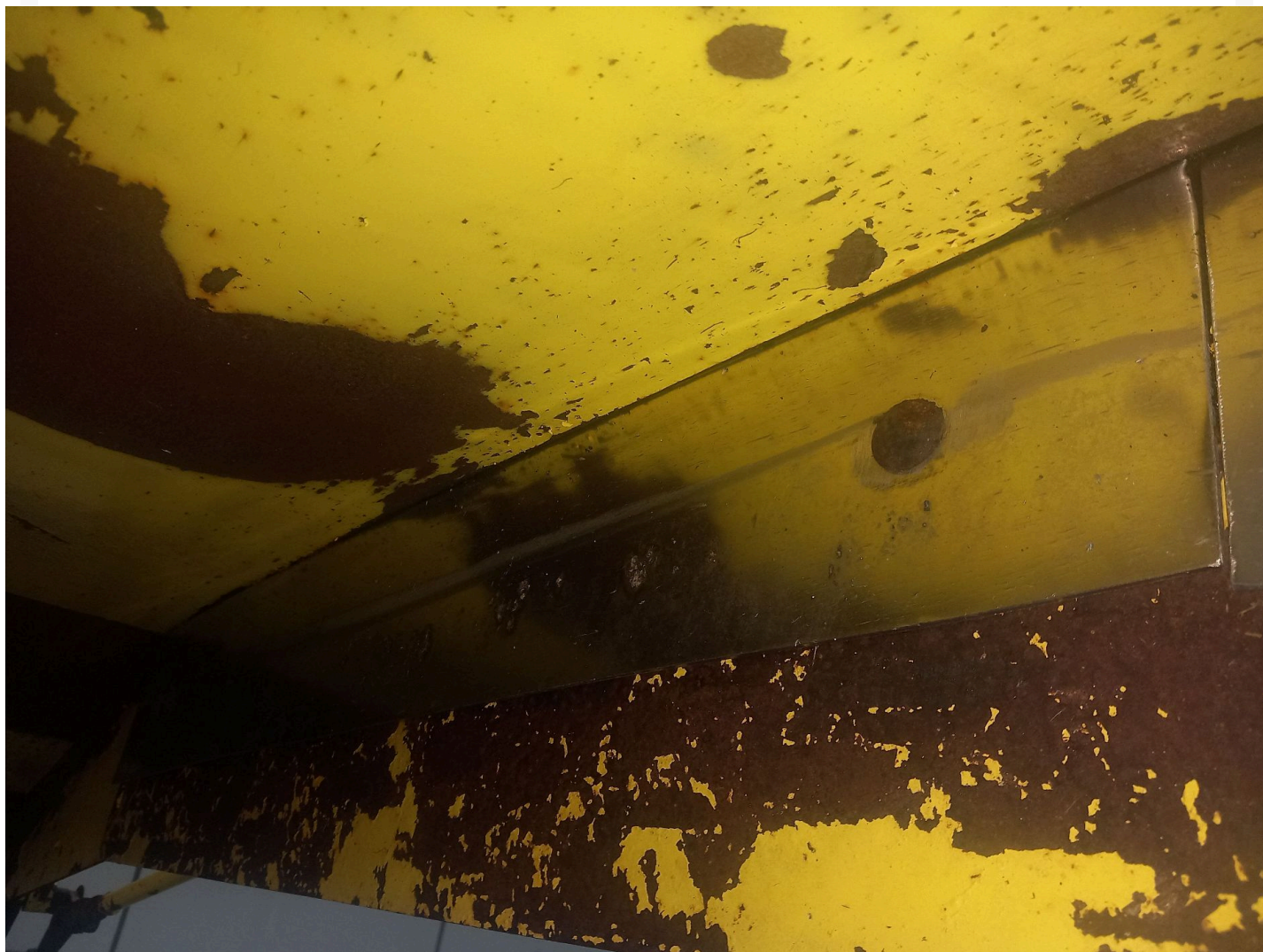
Partnumber	24104-30	Series	7000
Engine hours	4362	Road speed (km/h)	30
Drum hours	2897	Attr 2 or 4 wheel drive	2 WD
Engine Brand	John Deere	Engine type	L6
Engine Power HP	365	Engine Power (KW)	281
Front Tires Brand	Michelin	Rear Tires Brand	Michelin
Front Tires Size	800/65R32	Rear Tires Size	480/80R26
Front Tires profile	54	Rear Tires Profile	40
Emission Level	Tier 3		
Knife drum	48		
Amount of knives installed	48		
Kernel processor type	Saw tooth		

## Options

Auto lubrication	Yes	Spout camera	Yes
Climate control	Yes	Refrigurator	Yes
Side window wipers	Yes	Sunblinds window(s)	Yes



### 3) Product Images





## 4) Inspection Report

### Levels

Anti-freeze level in °C	- 40 °C	Cooling liquid level	V
Engine oil level	X*	Hydraulic oil level	V
Left hand front end drive oil level	V	Rear axle oil level	N.A.
Left hand rear end drive oil level	N.A.	Right hand rear end drive oil level	N.A.
Upper feedrolls gearbox oil level	X*	Gearbox oil level	V
Brake fluid	X*		

### Condition

#### Knife drum



Knife drum	48	Amount of knives installed	48
Knife condition	2%	Knife holders	V
Knife drum configuration	Corn	Shearbar front surface	★★★★☆☆
Shearbar rear surface	★★★★☆☆	Shearbar active position	Rear
Left hand Knife drum bearing	X*	Right hand Knife drum bearing	V
Knife drum bottom plate	★★★★☆☆	Knife drum rear plate	★★★★☆☆
Knife drum front cover	★★★☆☆☆	Knife drum stone cover	★★★★☆☆
Knife drum chain coupler	V	Sharpening stone	★★★★☆☆
Left hand lift cilinder	X*	Right hand lift cilinder	X*

### Kernel processor

Gras chute liner	★★★★☆☆	Corn shute liner	★☆☆☆☆
Kernel Processor rolls	★★★★☆☆	Kernel Processor upper roll	★★★★☆☆
Kernel Processor lower roll	★★★★☆☆	Kernel processor type	Saw tooth
Kernel Processor drive belt	★★★★☆☆	Kernel Processor drive tensioner bearings	V
Kernel Processor drive idler roller	V	Kernel processor belt tensioner rolls	V
Kernel Processor housing	★★★★☆☆	Tensioner springs gap adjustment	V
Wear plates	★★★★☆☆		

### Feedrolls

Upper front feedroll ★★☆☆☆

Upper rear feedroll ★★☆☆☆

Smooth roll ★★☆☆☆

Smooth roll scraper ★★☆☆☆

Upper rear feedroller left hand bearing X\*

Metal detector roll left hand bearing V

Smooth roll left hand bearing X\*

Upper feedroller arm bushing X\*

Upper feedrolls drive shaft X\*

Upper feedrolls arm Bump stops V

Gearbox upper feedrolls X\*

## Corn cave

Corn cave liner ★★☆☆☆

Corn cave door ★★☆☆☆

## Blower

Blower paddles 55%

Blower housing V

Right hand blower bearing X\*

## Transition housing

Transition housing ★★☆☆☆

## Spout

Upper front feedroll wear strips ★★☆☆☆

Metal detector roll ★★☆☆☆

Smooth roller chain coupler V

Upper front feedroller left hand bearing V

Upper rear feedroller right hand bearing X\*

Metal detector roll right hand bearing V

Smooth roll right hand bearing X\*

Feeder housing wear plates ★★☆☆☆

Upper feedrolls tension springs V

Loc gearbox X\*

Metal detector roll drive shaft V

Corn cave top liner ★★☆☆☆

Blower liner ★★☆☆☆

Left hand blower bearing V

Transition liners ★★☆☆☆

Spout turnable wear shims



Spout swivel tube



Spout complete housing



Spout front liner



Spout middle liner



Spout rear liner



Spout side liners



Inner Spout deflector



Outer Spout deflector



## Engine

Dry engine

V

Waterpump bearings

V

Engine belting

V

Engine belt tensioners

V

Exhaust system

V

Engine mounting

V

Airfilters

V

Rotary air screen

V

Rotary air screen rollers

N.A.

Cleaner cooling package

V

Engine belting idler roller

V

Rotary air screen belt tensioner roller

X\*

Rotary air screen belt

V

Rotary screen fan drive belt

V

Rotary screen fan drive belt tensioner

X\*

## Operational Test

### Main drive

Main clutch



Main drive belt



Main belt tensioner bearings

V

### Drive train

Front drive shaft's and coupler's

V

Tires condition

V

Rear axle stub axle

X\*

Rear axle ball joint

X\*

Steering cylinder

V

## Operators station

Front window	V	Rear window	V
Cab door	V	Cab door latch	V
Cab right hand window	V	Cab roof	V
Cab front bottom cover	V	Mirrors	V
Joystick	V	Armrest control panel	V
Steering wheel adjustment	V	Front window wiper	X*
Rear window wiper blade	N.A.	Side window wipers blade	X*
Cab air filter	X*	Seat	V
<b>Machine body</b>			
Front cover	V	Left hand cover	V
Right hand cover	V	Rear cover	V
<b>Electrical</b>			
Head lights	V	Rear lights	X*
Brake lights	V	Turn signal/hazard lights	V
Rotary Beacon	V	Dome lights	V
Cab upper front work lights	X*	Cab side work lights	N.A.
Fender work lights	V	Upper rear work lights	V
Lower rear work lights	N.A.	Spout work lights	V
Fuel gauge	V		
<b>Functional test</b>			



Engine oil pressure low idle cold	2.6	Engine oil pressure high idle cold	★★★★☆
Engine oil pressure low idle operating temperature	1.9	Engine oil pressure high idle operating temperature	3.2
Hydrostatic drive neutral	X*	Transmission shifting	V
4WD working	N.A.	Foot brakes L/R	X*
Parking brake	V	Main clutch working	V
Autolube	X*	Length of cutt adjustment	V
Header speed adjustment	V	Header height control	V
Header Lateral Tilt - if applicable	N.A.	Front hydraulics	V
Dump valve (high flow hydraulics)	N.A.	Spout turning	V
Metal detector	V	Spout deflector	V
Sharping system	V	Shearbar adjustment	X*
Cutterhead reverser	V	Kernel Processor gap adjustment	V
Airconditioning cold	V	Cab heating	V
Electrical functions cabin	V	Camera(s)	V
Radio	V	Road & Working Lights	V
Free of error codes	V		

## Header

Stocknumber	24105	Brand	Kemper
Model	345	Amount of rows	6
Working width (cm)	450	Autosteer sensor	N.A.
Header lateral tilt	N.A.	Header height control sensors	N.A.
Cutting knives	★★★★☆☆	Drum bearings	X*
Cleaners	V	Drums	V
Drum cleaners / scrapers	V	knife discs	V
Drive shaft	V	Drive line couplers	V
Drive chains and belts	V	Crop dividers	X*
Oil levels	X*	Down corn augers	X*
Ground skid plates	V	Fold cilinders	V
Hydraulic hoses/lines	X*	Transport accident prevention	N.A.
Support wheel(s)	N.A.	Support legs	V
Wearplates	V		

## 5) Operational test

---

### Main drive

Main clutch	★★★★☆☆	Main drive belt	★★★★☆☆
Main belt tensioner bearings	V		

## 6)Recommended Repairs

---

1 Knock sensor replacement  
 9 Liter engine oil change  
 Adjust hydrostatic drive to neutral  
 Autolube repair  
 Bearing replacement

Brake oil reservoir replacement  
 Cab AC filter replacement 7050-7080  
 Cab upper front middle traffic light RH repl  
 Corn shute liner replacement  
 Drum and knife disc bearing replacement Kemper 300 1e left  
 Drum and knife disc bearing replacement Kemper 300 2e left  
 Drum and knife disc bearing replacement Kemper 300 3e left  
 Drum and knife disc bearing replacement Kemper 300 4e left  
 Drum and knife disc bearing replacement Kemper 300 5e left  
 Feeder housing rear lower wear plates replacement  
 Front window wipers replacement  
 Installation 48 new corn knives  
 Kemper 300 6e gearbox knifedisc top seal replacement  
 Kemper 300/400 down corn auger tensioner bearing repl LH  
 Kemper 300/445/4500 down corn auger pully replacement LH  
 Kemper 300/445/4500 down corn auger pully replacement RH  
 Kemper 360 LH fold cilinder Hoses replacement  
 Knife drum front cover replacement  
 Left hand knife drum bearing replacement  
 Left hand roller lift support replacement  
 Left Side Windshield Wipermotor repl  
 LH rear light cover repl  
 LOC gearbox breather replacement  
 Metal detector rol replacement  
 Outer spout deflector replacement  
 Outher ball joint rubber RH replacement  
 Rear side wear plate's drum bottom replacement  
 Right hand blower bearing repl 7000-7050 old style  
 Right hand roller lift support replacement  
 Rotary air screen tentioner roller replacement  
 Rotary screen 50/80 series idler roller LH replacement  
 Rotary screen fan bearings and housing repl  
 Rotary screen fan drive tensioner roller replacement  
 Smooth roller replacement  
 Smooth roller scraper replacement  
 Spout rear side liners replacement  
 Spout turntable wear shims replacements  
 Stub axle play repair LH 2wd axle  
 Upper feedroller arm bushings replacement before 510523  
 upper feedrolls drive shaft replacement  
 Upper feedrolls gearbox new seals and bearings from SN508100  
 Upper front feedroller right hand bearing replacement  
 Upper rear feedroller left hand bearing replacement  
 Upper rear feedroller right hand bearing replacement  
 Welding 2 hours

## 7) A&M PREMIUM Warranty

---

All our equipment is inspected with the Harvester-Guard (R) inspection software. This certificate declares that this forage harvester has A&M PREMIUM warranty on:

1. All inspected CROP-FLOW components with a 3, 4 or 5 star rating.
2. All CROP-FLOW bearings which have status approved.

### **Warranty on repairs:**

Components with 1 or 2 star rating are subject for repair and have no warranty. In case A&M Machinery is ordered to repair the 1 and 2 stars components then warranty is in place, as repair implies upgrade to 5 stars or status approved.

Eventually repairs are reported in the 'A&M PREMIUM or A&M EXCLUSIVE warranty certificate & terms' document.