



Harvester Guard inspection certificate

KNIFE DRUM 2X16 FR CMPLT MAIZE

#87387689-OEM



AMMACHINERY

Industriestraat 23
5961 PH Horst
The Netherlands
T + 31 (0)77 - 2066603
sales@ammachinery.nl
<https://www.ammachinery.nl/>



Dear sir/madame,

Thank you for your interest in our **KNIFE DRUM 2X16 FR CMPLT MAIZE** built in ,with our internal stock number **87387689-OEM**.We are a dedicated SPFH specialist, we work professional and transparent, all our equipment is cleaned and run trough our 300 points inspection report. Use this link to get below information:

Technical specifications

Partnumber

87387689-OEM

Options

2) Short Description

COMPLETE KNIFE DRUM 2X16 KNIVES

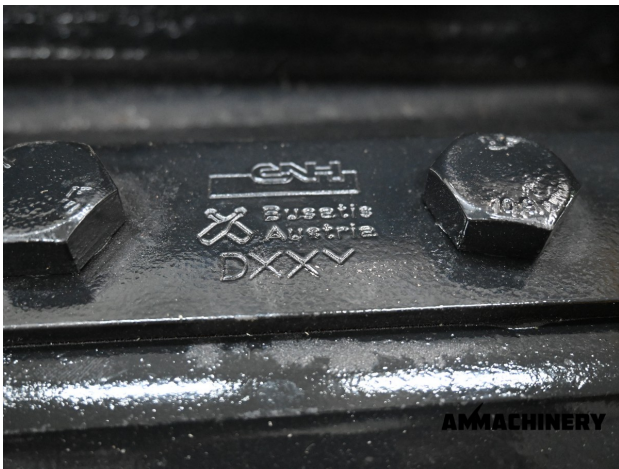
ASSEMBLED WITH HUBS AND 32 CORN KNIVES

FITS ON NEW HOLLAND FR

NEW

3) Product Images





4) A&M PREMIUM Warranty

All our equipment is inspected with the Harvester-Guard (R) inspection software. This certificate declares that this forage harvester has A&M PREMIUM warranty on:

1. All inspected CROP-FLOW components with a 3, 4 or 5 star rating.
2. All CROP-FLOW bearings which have status approved.

Warranty on repairs:

Components with 1 or 2 star rating are subject for repair and have no warranty. In case A&M Machinery is ordered to repair the 1 and 2 stars components then warranty is in place, as repair implies upgrade to 5 stars or status approved.

Eventually repairs are reported in the 'A&M PREMIUM or A&M EXCLUSIVE warranty certificate & terms' document.